

Danfoss



No-one promised floor heating
would be easy – Until now



Wireless wellness by Danfoss

Advanced made easy

The Danfoss wireless CF2 floor heating control system offers optimum reliability and extended functionality, combined with unrivalled ease of installation and use.

For installation, all you need is to mount the Master Controller on the wall, connect to a 230V power outlet, and take a few minutes to connect the actuator cables. The Master Controller features up to 10 outputs which accommodate a wide range of actuator cables.

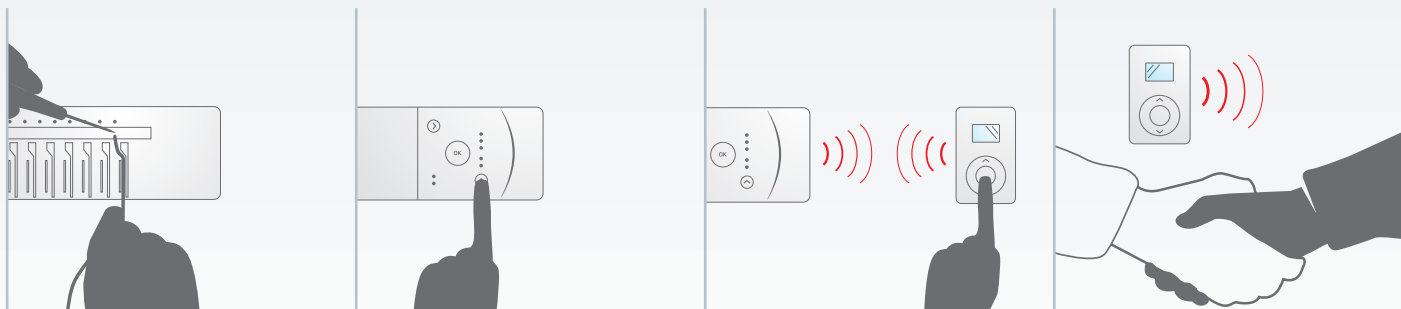
After the wireless assignment of the room thermostats to the Master Controller, the system is ready for use.

The 2-way wireless communication ensures a high level of transmission reliability, and the possibility by link test to verify that all wireless connections to room thermostats are in function.

You're now ready to hand over the Danfoss wireless CF2 floor heating control system. The automatic self diagnosis system will ensure easy maintenance.

As easy as 1-2-3-4...

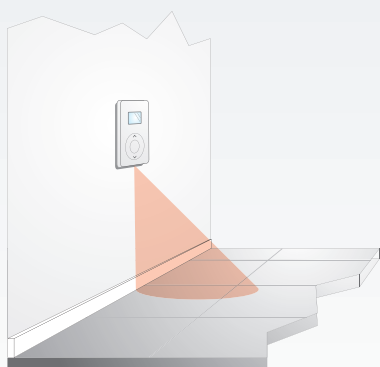
The Danfoss wireless CF2 floor heating control system offers optimum reliability and functionality, and is installed as easy as 1-2-3-4...







Adding comfort and safety to floor heating



As an additional safety feature the wireless connections may be tested prior to physical installation of the room thermostats on e.g. the wall. Simply activate the link test function and see the immediate status of the wireless connection directly on the room thermostats.

All room thermostats are equipped with an LED indicator for link test and battery status. They are available in a range of versions for specific purposes:

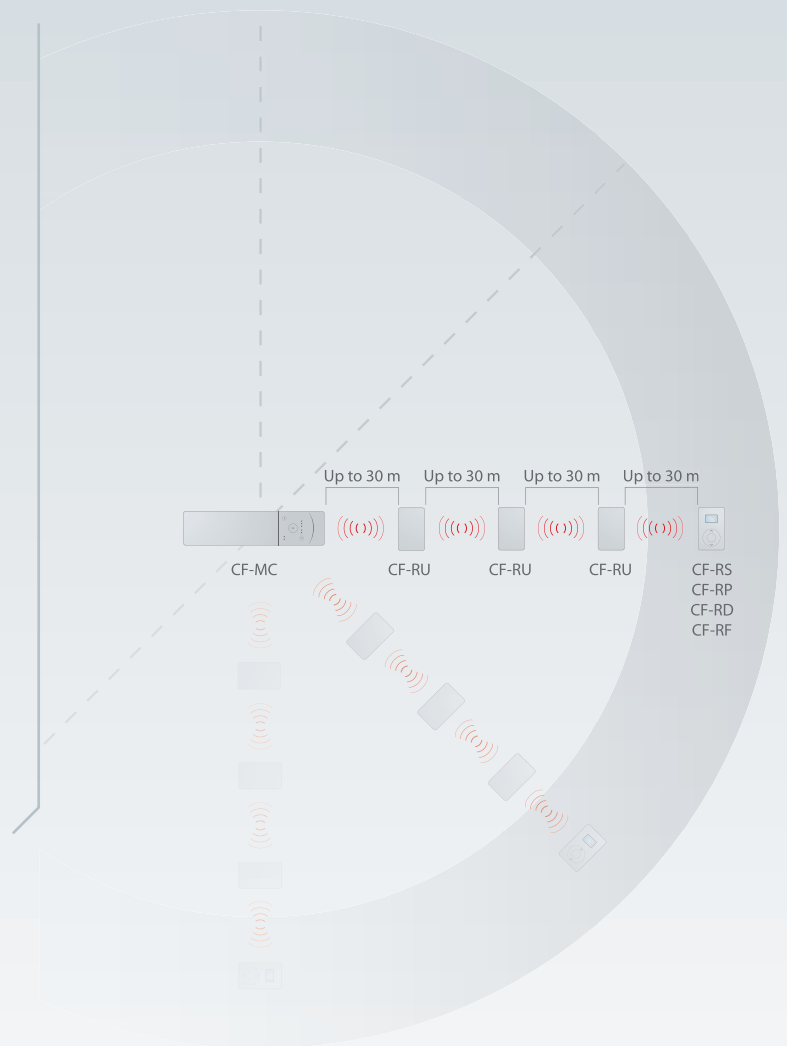
- » The aesthetic standard room thermostat CF-RS with temperature setting by turning knob
- » The public (tamperproof) CF-RP features hidden set point adjustment and link test activation, which makes this room thermostat particularly useful in public places, children's rooms etc.
- » The room thermostat with digital display CF-RD shows e.g. actual or set room temperature, icons for low battery, link test, error codes etc.
- » The CF-RF room thermostat has all the same features as the display version, but is furthermore equipped with an InfraRed floor sensor which measures and limits the minimum and maximum floor surface temperature. This makes the CF-RF ideal for use in bathrooms, rooms with quarry tiles or wooden floors

Repeating improves long-distance communication

The Repeater Unit CF-RU extends the transmission range between Master Controller, room thermostats, and other connected components by 2-way wireless communication. The Repeater Unit is particularly useful where distance or physical objects may impede any wireless connection. If the link test reveals a missing wireless connection to the Master Controller, simply install the Repeater Unit and reactivate the link test.

The Repeater Unit forwards the signals between room thermostats and Remote Controller (optional) to the Master Controller. This is particularly useful in larger installations where physical distance between components may prevent proper wireless connection. The Repeater Unit may also be used in places where radio transmission barriers occur; i.e. where radio signals may be obstructed by heavy walls, metal objects, etc.

The Master Controller supports up to 3 Repeater Units installed in a chain between the relevant room thermostat and the Master Controller. More parallel chains of Repeater Units from a Master Controller are possible.



Hands-on control at a distance



The entire wireless CF2 floor heating control system may as an option be operated by the easy-to-use CF-RC Remote Controller. When installing the system, the wireless Remote Controller facilitates the naming and setting of all rooms to be temperature controlled by the system.

The Remote Controller can be used for setting all outputs of the Master Controller individually for either floor heating or e.g. radiator systems. The Remote Controller also provides access to system surveillance, zoning with temperature setback and period programme for holidays etc. Any system error will be logged by the Remote Controller and data will be stored in memory for later access.

All functions are available through a user-friendly menu on the Remote Controller's large display.





Why settle for evolution when revolution is available?

The wireless CF2 system is a major leap forward in floor heating control systems. The CF2 system is extremely easy to install and operate, and yet it offers a wide range of new and unique functions for controlling floor heating systems.

Common features for room thermostats

- » Timeless design
- » Easy wireless installation
- » Low battery indication via LED
- » Link test status by LED
- » Powered by 2 x AA alkaline 1.5V batteries
- » Possible temperature override by Remote Controller

Quick and easy dimensioning of the floor heating system

The proper dimensions for floor heating systems can be calculated in a matter of minutes by using the Internet-based Danfoss Floor Heating Dimensioning Programme. With a few, basic inputs, this easy-to-use software will provide all the necessary information regarding system design, product selection, and commissioning. This makes the Danfoss Floor Heating Dimensioning Programme a very valuable tool in both the bidding and the implementation phases.



CF-RS 088U0210

Room Thermostat, Standard

- » Temperature setting from 5 – 35°C by turning knob



CF-RP 088U0211

Room Thermostat, Public

- » Tamperproof. No direct access to settings
- » This room thermostat is particularly suited for public and semi-commercial installations



CF-RD 088U0212

Room Thermostat, Display

- » Displays either actual temperature or setting temperature
- » Temperature setting from 5 – 35°C by push buttons
- » Clock symbol indicating setback/timer function
- » Electronic limitation of min./max. room temperature via menu on display
- » Alarm icons and error codes in display, e.g. low battery indicator



CF-RF 088U0213

Room Thermostat, InfraRed Floor Sensor

- » This room thermostat includes all the features of the CF-RD plus
- » Measures the floor surface temperature by InfraRed floor sensor
- » Regulates the room temperature according to min. and max. floor temperature settings
- » Icon in display for floor sensor



Master Controller CF-MC 10 outputs: 088U0200 / 5 outputs: 088U0205

- » 2-way wireless transmission at 868 MHz
- » LED indicator for status on each output
- » Wireless installation of room thermostats and other system components
- » 24V short-circuit protected outputs
- » Versions with 5 and 10 outputs available
- » Regulation by ON/OFF or PWM (Pulse Width Modulation) principle
- » Two separate relays for both pump and boiler control
- » Actuator outputs accommodate several cable types for easy cable fixing and strain relief
- » Automatic self diagnosis program with error indication
- » Optional heating/cooling switch



Remote Controller CF-RC 088U0220

- » Wireless connection to all CF2 components via Master Controller
- » Temperature setback program for zone control of up to 6 zones and period programming for energy saving during holidays etc.
- » Alarm log and easy failure identification
- » Naming and central settings for all room thermostats
- » Individual setting of each output on Master Controller for either floor heating or radiator system



Repeater Unit CF-RU 088U0230

- » The Repeater Unit extends the wireless transmission range to the Master Controller from room thermostats
- » If e.g. a room thermostat is out of reach of the Master Controller, the Repeater Unit will repeat the wireless signal, thus re-establishing connection



Wireless wellness by Danfoss

www.heating.danfoss.com